

# Hi, Neighbor!

A Quarterly Newsletter of the Eastmorland Community Association

First Quarter 2011

## Great Turnout for ECA's Fall Leaf Raking Party

### *A Special Thanks to All the Rakers*

Jennifer Moore

A huge thank you – as big as the piles of leaves that were raked! – to the many volunteers who turned out to help with ECA's 6th annual fall leaf raking party. The 19 volunteers polished off a dozen yards in less than 3 hours on a crisp, mild fall morning in November. (One especially industrious neighbor – you know who you are! – started working on yards even before the day of the event, which was also a fantastic help.)

Raking is a workout, but it's made so much easier with a team of neighbors pitching in to help. Judging from the sincere thanks we received from all the homeowners, everyone's time and labor were deeply appreciated. ECA and the raking volunteers also appreciated the thank-you gifts of cookies and snacks!

Many thanks to the Whitman/Johnson family for generously offering their home as a meeting place and spot to gather for the potluck lunch. Everyone enjoyed their hospitality, as well as the opportunity to visit and get to know each other while munching on the delicious food.

New neighbors enjoyed looking through ECA's 50th anniversary commemorative booklet, which was a labor of love published in 2007. (Copies are available if you're new to the neighborhood and would like one.)

Everyone had clearly worked up an appetite - not a slice remained from the three large pizzas ECA purchased from Glass Nickel!

Be sure to check out the photos of the raking party in this issue. (Photos taken by Patrick Soukup.)



#### Inside This Issue...

Kathy's Comments.....	2
Eastmorland Notes .....	3
Pinney Branch Library Events.....	4
Grand Prize Contest Winner.....	5
Schools of Hope at Schenk.....	5
From Our County Supervisor.....	6
From Our Alder .....	7
Viewpoints.....	8
The 1/4-Acre Garden Spot.....	10
Dane County 175th Anniversary: Join the Party!.....	11
Change of Status for Dempsey Manor?.....	12
News from Our Schools .....	13
One- and Two-Family Dwellings Need Smoke Alarms and Carbon Monoxide Alarms.....	14
Around Your Neighborhood: Leaf Raking Party .....	15
Community Supported Agriculture Event Promotes Eating Local, Healthy, Organic Vegetables .....	16

Visit us online at  
[www.eastmorland.org](http://www.eastmorland.org)

# Kathy's Komments



Kathy Soukup, ECA President

Another year has gone by, a happy new year to you all. Time passes so quickly. It doesn't seem very long ago that we were awaiting little Diego's birth, and now, shortly he will be a whole year old - such a happy, busy little fellow also. And then, in the space of about 3 minutes he fell asleep on his papi's lap - with no complaining and no fanfare - he just laid his head back against Luis and was asleep. I was amazed! They visited after Christmas, and we enjoyed their visit immensely!

Our special neighbors enjoyed being remembered at Christmas, and other neighbors enjoyed being Santa's helpers and delivering to them.

A couple of things are happening around the neighborhood. I received a phone call and then a letter stating the Ecumenical Housing Corporation (EHC), which owns Dempsey Manor, "seeks to convert it to a non-age restricted apartment community that continues to meet WHEDA's guidelines for affordability." Please see the article on page 12 in this issue. Carla Fears, Executive Director of EHC Corporate, and Dan Rolf, who is president of the EHC Board of Trustees, attended our January ECA meeting bringing information, an aerial photo of the building, and answers to questions asked.

In speaking with Dan Rolfs and Carla Fears, we agreed that there needs to be a neighborhood meeting set up so that concerned neighbors would be able to meet various people who are involved in their status change. The date and place of the meeting is Tuesday, February 8, 2011 at Lakeview Moravian Church, 7:00 pm. Members of EHC and some of their partners in this venture will be present at this meeting. We hope to see you there!

Also, former Royster-Clark committee members will be introduced to a possible developer of the property. Please see Larry Palm's article on page 7 in this issue.

Be sure to see the article about Sharon & John Bartoschs' granddaughter, Nadia, who was the Christmas card contest grand prize winner in the Catholic Order of Foresters' 2010 contest!

I really like to see articles about, and by, neighbors! We are, after all, a neighborhood! What our neighbors do is of interest to most of us.

Kathy

P.S. Please see the article about Schools of Hope at Schenk Elementary School on page 5 of this issue. Twenty-three of us are helping out tutoring at Schenk weekly, but 18 more are needed.



## Excellence in Senior Living!

A unique blend of independence and assistance.

Independent Living · Memory Care · Rehabilitation Service · Assisted Living · Skilled Nursing · Respite Care

Call (608) 268-7009 to request an information packet or to schedule a personal tour.

618-719 Jupiter Drive  
(608) 268-7009  
Grandview Commons  
[www.OakParkPlace.com](http://www.OakParkPlace.com)



Oak Park  
place  
MADISON  
Live Life. Live Well.

## Hi, Neighbor!

Published Quarterly February 2011

The newsletter is published the first day of the following months: February, May, August and November. Articles for publication should be sent to [newsletter@eastmorland.org](mailto:newsletter@eastmorland.org) as an attachment in Word format. If email is not available, copy can be mailed to ECA, PO Box 14584, Madison, WI 53708. Advertising information can be obtained by calling 244-8965 or by email [ptsvegas@yahoo.com](mailto:ptsvegas@yahoo.com). The deadline for copy and advertising is the 10th of the month prior to publication dates.

### ECA Directors

#### President

Kathy Soukup • 244-8965

#### Vice President

Suzanne Sarah Forsberg • 244-2128

#### Secretary

Open

#### Membership

Carrie Ezzell • 244-3117

#### Treasurer

Patrick Soukup • 244-8965

#### Fundraising

Carrie Ezzell • 244-3117

#### ECA Meeting Agenda

Jennifer Moore • 243-8668

#### Advisor

Ed Woolsey

#### EINPC Liaison

Sadler Bell

### Standing Committees

#### Social and Recreation

Bernie Hanson • 244-8958

#### Sunshine

Glennis Whitish • 244-8195

#### ECA Annual Garage Sale

Bernie Hanson • 244-8958

#### LaFollette High School Liaison

Helen Clark

### Hi, Neighbor!

#### Co-Editors

Jennifer Moore • 243-8668

Kathy Soukup • 244-8965

#### Advertising

Patrick Soukup • 244-8965

#### Production

Philip Forsberg • 469-7468

#### Distribution

Volunteers and Block Captains

### Elected Officials

#### State Senator

Mark Miller • 266-9170

#### State Assembly

Joe Parisi • 266-5342

#### County Supervisor

Tom Stoebig • 222-6429

[stoebig@co.dane.wi.us](mailto:stoebig@co.dane.wi.us)

#### City Alder

Larry Palm • 692-8416

[lpalm@cityofmadison.com](mailto:lpalm@cityofmadison.com)

# Eastmorland Notes

## Garage Sale

Don't worry. We're not planning one in the snow but we would like some input from you. If you remember, last year we did not have an Eastmorland garage sale. We only received 3 calls of interest. Does this mean you would rather have one when you feel like having one at your own selected time or does it not matter when it is? May is a busy time with several neighborhoods & organizations having theirs. Summer is always good & fall, like spring, is untrustworthy weather. Would you like to try summer with a Sunday perhaps? We would really like your opinion, if you are interested. Call Bernie or leave a message at 244-8958.

## Thank You Elves!

Thank you to all the elves that, once again, made this Christmas & holiday season a meaningful time for all involved. First, the special neighbors that received plates of wonderful baked goods, candy & small craft items, who were so very appreciative of their visit from an elf, & the children who got a visit from that red-suited man. What a terrific way to begin the season for all those involved. The plates & Santa's bag were filled by more elves that looked forward to taking part in this project. Some elves baked, some plated, some delivered & of course our own Santa & driver. We did 45 plates this year so we can always use more help. Just a little of your volunteer time in any of these categories can add up to a very successful project. It's not work, it's enjoyment.

Thank you, again, for all your help. The elves this year were: Marla & Seth Schoop, Bernice Slauson, Tom Theisen, Bret Seferian, Jeannine Larson, Karen Dellinger, Ed Woolsey, Curt Severson, Tom Koch, Wayne Niebuhr, Delores Replinger, Kris Whitman, Pam Showers, Carrie & Don Ezzell, Glennis Whitish, Kathy Soukup & Bernie Hanson

## ECA Calendar of Events

Tuesday, 2/8 - ECA meeting\* - This will be a meeting with EHC (see p. 12) for neighbors to ask questions.

Tuesday, 3/8 - ECA meeting\*

Tuesday, 4/12 - ECA meeting\*

Tuesday, 5/10 - ECA meeting\*

Saturday, 5/21 - 3rd Annual Eastmorland Plant & Seed Swap

\*Eastmorland Community Association meetings begin at 7 pm on the second Tuesday of each month (no meeting in December) at Lakeview Moravian Church, 3565 Tulane, across the street from Schenk Elementary School. Use the entrance on Hargrove St. nearest Dennett St. Call an ECA director if you have a topic to discuss, need information, or have questions. We look forward to seeing you there.

Auto Accidents Fibromyalgia  
Sciatica Allergies Carpal Tunnel  
Ear Infections Fitness Slipped Disc  
ADHD Nutrition Colic Posture Exercise  
Headaches Stress Pain Syndromes Migraines  
Asthma PMS Whiplash Scoliosis Diet Pregnancy .....



Ken Bowers D.C.  
509 Cottage Grove Road  
442-9909

*Your Family's Health and Wellness Center*

For more information go to

[www.bowersfamilychiropractic.com](http://www.bowersfamilychiropractic.com)



**Carrying on the  
neighborhood  
tradition of great food,  
great drinks and  
friendly folks.**

local family owned and operated

**802 Atlas Ave. 441 1977**

[www.talula802.com](http://www.talula802.com)  
(the old Pigs Ear and CJ s. Ya?)

**American food at its finest daily**

## Pinney Branch Library Events

**Preschool Storytime** – Wednesday mornings at 9:30 and 10:30, January 19 through March 16. Stories, songs, fingerplays, a short movie based on a children's book and a craft for children ages 3-5. Younger siblings welcome. No registration required.

**Reader's Theater for Children** – Reader's Theater for Children meets the 4th Monday, January through May, from 2:30-4:00 p.m. Read and perform a variety of children's books for an audience! Children must be able to read. Call 224-7100 to register.

**After School Chess Club** – First and third Thursdays at 4:00. Learn how to play chess and then play against other children with varied levels of experience. For children in grades K-12. Children under 7 must be accompanied by an adult.

**Tax Assistance** – Tuesdays through 4/12, 1:30 – 4:30. Free assistance from AARP volunteers to help you fill out and file your Wisconsin and Federal personal income taxes. Call 224-7100 to reserve a half-hour appointment.

**Humanitarian Knitting** – First and third Thursdays at 6:30. Knitting for charity. Assistance is available for those wishing to learn to knit or to improve skills. Yarn is provided.

**Pinney Book Group** – Fourth Tuesday at 7:00. The Pinney Book Group will discuss "A Gate at the Stairs," by Lorrie Moore on February 22; "Seabiscuit, An American Legend," by Laura Hillenbrand on March 22; and "The Maltese Falcon," by Dashiell Hammett on April 26.

**Community Supported Agriculture** – March 3, 1:00. Do you want to eat healthier but think you can't afford it? Getting locally grown fresh produce might be easier than you think. A representative from the Madison Area Community Supported Agriculture Coalition will talk about Community Supported Agriculture. The discussion will cover how the program works and information about the Partner Shares Program for families on tight budgets.

**Making the Good Life Last** – March 8, 7:00. In his book, "Making the Good Life Last: Four Keys to Sustainable Living" Michael Schuler argues that sustainability must become a major consideration as we ponder the future. Schuler believes that by applying four timeless and simple behavioral principles we will be better able to acquire the good life and make it last.

**Healthy Lawn Care** – March 30, 7:00. Keep your lawn green in more ways than one. The Greater Madison Healthy Lawn Team will show you how to care for your lawn using fewer chemicals. Come with your questions about low-impact lawn maintenance.

**One-on-one Job and Computer Assistance** – Wednesdays from 4:00 – 7:00. Need help looking for a job? We can help you: work on your resume and cover letter, set up an email account, locate Internet job sites, apply for jobs online, or improve your computer skills. Call 224-7100 to make an hour-long appointment.

## ECA Paid Membership

### \$10 per household

An annual \$10 per household from paid members supports all of the Eastmorland Community Association business conducted. ECA relies on the contributions of paid members to strengthen this community's schools, communication, and environment in areas such as the following:

- Donations to area schools' events and fundraisers (Clay Stomp, graduation party expenses)
- Materials and refreshments for volunteer events (leaf raking, parks clean-up)
- Neighborhood improvements (Eastmorland Park playground)

Paid member households also enjoy added benefits such as: Santa visits; invitations to neighborhood social gatherings (potlucks, meet & greets); and inclusion in the annual garage sale newspaper ad.

---

Name

---

Address

---

Phone

---

email

To become a contributor, please mail this form with \$10 to ECA, P.O. Box 14584, Madison, WI 53708. Thank you very much for supporting ECA!

## Grand Prize Contest Winner

Nadia Reeves, granddaughter of Sharon and John Bartosch, was very surprised to find out she had won a national contest with her Christmas card entry in the Catholic Order of Foresters 2010 contest. Her card became their official Christmas card for 2010.



## Schools of Hope at Schenk

Schools of Hope is a nonprofit organization partnered with the United Way and RSVP of Dane County, and the Madison Metropolitan School District (MMSD). The Schools of Hope project is dedicated to closing the educational achievement gap by focusing on one-on-one tutoring in math and literacy and developing family literacy resources. Our goal is to provide volunteers who assist children in developing reading and math skills. Through patience and encouragement, the volunteers often enhance the self-esteem and confidence in the children they work with, too. We see these results by noting the children's successes in their classrooms as well as the results of school-based and standardized tests.

Currently we have 23 wonderful tutors working with Schenk students weekly. These tutors are people from the surrounding Schenk community who have graciously dedicated some of their time to the students at Schenk. We are very grateful for their help. However, demand for tutors still outweighs the supply. We need 18 more tutors just to meet the current demand, which is always growing. If you have any time that you would be able to work with students on math or literacy, please consider volunteering with Schools of Hope. You only need an hour a week to make a huge difference in a student's life.

We depend on people from the community to keep our program going and are in need of more volunteers. No prior experience is necessary. If you are interested in finding out more about the Schools of Hope program, or would like to volunteer, please contact Sarah Kervin at 608-204-1511 or [schenk@schoolsofhope.org](mailto:schenk@schoolsofhope.org).

**Please remember our advertisers!**  
**They make this newsletter possible.**

**10% off**

*Your next purchase with this coupon*

**HARLEY'S LIQUOR & BAIT**

**222-7941**

**3838 Atwood Avenue Madison, Wis.**



## LOOKING FOR RESULTS?

*Call if I may be of some assistance to you or your friends and family in buying or selling a home!*

**JOSH LAMP**

**(608) 239-2559**

**[lampj@firstweber.com](mailto:lampj@firstweber.com)**

Experience you can trust. Over 100 closed transactions in the last 3 years!



# From Our County Supervisor



## Tom Stoebig

District 17

It's the start of a new year. I hope that you made the most of the holidays, and I wish you the best in 2011.

### Public Safety Communications

Perhaps this story begins more than 10 years ago with a Federal Communications Commission mandate to narrow band radio frequencies used in all public safety communications.

To meet this requirement, Dane County embarked on a \$30 million proposal several years ago that would expand coverage and public safety communications interoperability on a countywide basis, called DaneCom. Sufficient city and village participation in the proposed system failed to surface, largely over the issue of locally shared operational and maintenance costs. That led to County Board adoption of a scaled back proposal, and a multi-jurisdictional governance board to determine a fair and equitable method for sharing annually occurring costs.

Two weeks before Christmas, I was asked to serve on a six-member voting panel, representing the County Board, to review project proposals for this countywide public safety interoperable radio system. I almost bit off more than I could chew. But it was for the greater good, and worth the effort.

Four major corporate vendors responded to Dane County's re-bidding process. The county's request for proposals was detailed and technical. The four project proposals totaled more than 2400 pages of reading. A 34-page evaluation form was developed by 911 Center staff and an independent engineering firm for the written portion of the evaluation process. We had two days of discussion with an 8-member technical user panel to help with the written evaluation of the proposals. Following that, day-long interviews were conducted with each of three vendors invited to participate in oral presentations. Our role on the six-member voting panel was to rank the vendor proposals based on technical design and system capabilities. More than 70 hours of work effort later, our task was over.

Cost estimates comprised 25% of the evaluation process, and were reviewed and analyzed by a separate, smaller team. In the end, the Harris Corporation was chosen as the vendor that best responded to the requirements of the county's RFP. Although final cost figures for the project won't be known until completion of final design and contract talks, the result is a good one for taxpayers and citizens.

The need for a state-of-the-art, interoperable, public safety radio system for police, fire and EMS – one that can both broadcast and receive signals from neighboring counties, state agencies, county highway crews, and other potential first responders – made itself apparent on September 11, 2001, and more locally with the Stoughton area tornados from several summers ago and the more recent snow blizzard closure of the I-90/I-39 Interstate in southern Dane County. Because the DaneCom project was re-sized and re-bid, we're able to bring significant savings to taxpayers, both in terms of

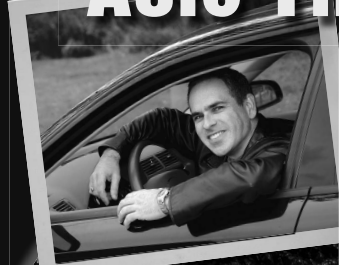
construction and ongoing maintenance costs, while improving the ability of public safety personnel to communicate with dispatchers and one another.

If all goes well, construction of the new countywide interoperable public safety communications system will begin this summer and be completed by late 2012.

### How to Reach Me

As always, please contact me if you have any concerns or questions regarding county government happenings. I can be reached at 222-6429 or by email at TStoebig@charter.net.

## Father and Son Auto Financing!



The secret to families getting richer...

The easiest way to have more money, is to pay less interest... tell a family member or friend that we have money to lend and they can become a member, too!

We refinance other financial institution and dealership loans to make you richer!

**POCU IS OFFERING  
80TH ANNIVERSARY  
MEMBER RATES!**

**AS LOW AS  
3.80%  
APR\***

POST OFFICE



CREDIT UNION

151 West Corporate Drive  
Madison, Wisconsin

**mypocu.com**

**244-3518**

NCUA

POCU reserves the right to change, add or delete services, fees and rates stated at any time. \*APR is the Annual Percentage Rate. Monthly payment based on payment per \$1,000 for rate and term. Rates are based on applicant's credit history. Loans currently financed with PCUC are not eligible for refinance under the offer.

## OASEN PLUMBING

*Serving Madison Since 1946*

3862 Johns Street  
Madison, WI 53714

Phone: 608-222-3656  
Fax: 608-222-3960



Jim Oasen  
Ken Oasen

# Drums n' Moore School of Music

Your local music store since 1994

Lessons during the day,  
after school & weekends

Pay by the month

Instrument rentals

Drums, Guitar, Keys,  
Woodwinds, Strings,  
Brass, Accordion



## 6033 Monona Drive

Retail 222-DRUM School 661-4442

*We practice what we teach.  
Teachers with Degrees in Music!*

## We Need Block Captains!

Block captains deliver the newsletter and, at various times, deliver communication from the ECA Board and/or district alder. As block captains, you may also represent the ECA Board to those households you deliver to.

If interested, call Kathy @244-8965.

## From Our Alder



**Larry Palm**

15th District

For almost five years we have been working collectively on the redevelopment of the Royster Clark site. After the initial concern about the site's future and compatibility of its reuse and area neighborhood, much work has been done to strengthen our ability to shape the future of the site.

Through a city process, we have developed a special area plan for the site which calls for a thoughtful mix use of the site. I've covered this plan previously and it can be found online at: <http://www.cityofmadison.com/planning/royster.html>

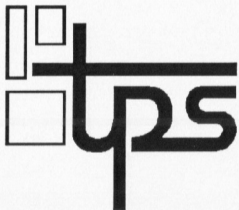
There have been several unsuccessful efforts to purchase the site from its current owner, Agrium. In January, locally owned Ruedebusch Development has become the most recent with an accepted offer contingent on a few issues. Information on Ruedebusch can be found at: <http://www.ruedebusch.com>.

I have met with Carl Ruedebusch, the owner, several times and he has informed me that his goals for the site are very consistent with our adopted plan. As a Madison resident, he has expressed a desire to "do the right thing." By the time that you receive this newsletter, the Royster-Clark Neighborhood Planning Team (RCNPT) will have also met with Ruedebusch and discussed the plan and his intention.

Having this property under local control is certainly an advantage. Having the property being viewed for redevelopment also helps us more logically plan for the demolition of the existing building, which I believe everyone is concerned about. That's certainly the first phase to a long process.

Once more is known about Ruedebusch's plan, I will invite area residents to whatever meetings that are necessary to collect feedback, answer questions and provide information about the process. Hopefully, we have a buyer that will be able to take control of the land and bring our collective plan into fruition.

If you have any questions, please do not hesitate to contact me at [lpalm@cityofmadison.com](mailto:lpalm@cityofmadison.com) or 692-8416.



## THYSSE PRINTING SERVICE

2021 WINNEBAGO STREET

MADISON, WISCONSIN 53704

Phone: 608.249.6951 • Fax: 608.249.2235

Email: [thysse@thysseprinting.com](mailto:thysse@thysseprinting.com) • Web: [thysseprinting.com](http://thysseprinting.com)

**Offset & Letterpress Print Shop**

*Excellent Quality • Super Service • Fabulous Prices*

### Our Printing Menu

Letterheads • Envelopes • Carbonless Forms • Business Cards • Newsletters • Brochures • Flyers • Labels  
Booklets • Multicolor Printing • Rubber Stamps • Raised Lettering • Bindery Services

# Viewpoints

## Work of Art or a Traffic Hazard?

If you have traveled Walter Street you can't miss them. I meant seeing them, not hitting them. There have been a lot of complaints about these structures or "Traffic Calming Devices" as titled by the city. One of the very first comments voiced by a resident was, "this structure is going to cause an accident". It sure did, about a week later there was an automobile accident at that intersection. I was told that the grass was so high it obstructed the view of one of the motorists involved. Residents and others have been asking "why did the city have to do this of all things?" Answer – A concern about speeding on Walter Street led to complaints that reached city officials. There were meetings and discussions on how to correct this problem. It came down to a choice of traffic calming devices (circles, islands, speed bumps) and where to place them. A hundred ballots were mailed to residents in the Walter Street Area and the recipients had a choice to vote in favor of traffic calming devices or against them. Only twenty-eight ballots were returned to the city. Of the twenty-eight ballots returned, nineteen were in favor of the devices and nine were against. Majority rules.

## Looks Like Nobody Gives A Hoot

An article that ran in the last issue (November 2010) of the "Hi, Neighbor!" asked readers (any number would have been great) their negative or positive thoughts and opinions regarding the newsletter. 1700 copies were printed and circulated and we did not even receive a single response. What gives? Doesn't anyone read the newsletter? Too busy, tired, not interested? Well, there has been talk that we just might go electronic. It would take less effort, money and time to produce and besides, look at all the trees we'd be saving. Also, we'll have to take back that FREE CASH offer that was made. Sorry.

## Belated Congratulations To:

Kathleen (Kathe) McCormick-Klicko and Charles (Chuck) Kubicek. Their wedding was on July 9, 2010. Kathe's growing years were in our Eastmorland Community. Kathe is mother of 2 teen-age daughters and Chuck is father to 2 grown daughters and 1 son. The couple reside in McFarland. We wish them and their families the very best in their new lives together.



## Another Disappointing Dues Year

A number of years ago it was established by the Eastmorland Community Association that the residents of this area would each contribute \$10 a year to be used for community projects, needs and miscellaneous expense. This particular contribution would also entitle you to receive the newsletter. Later on it was voted that all the residents in the area would receive the paper whether they made their \$10 contribution or not. Today, the membership contribution is still \$10 and we have projects we would like to complete but do not have the cooperation we need. Out of roughly 1635 residences in the Eastmorland Area only 80 households have contributed this past year of 2010. Let us hope for better results in 2011.

## A Special "Thank You" to These Generous People ...

The Eastmorland Community Association recently received generous cash donations from the following people: Earl and Betty Knitt, Stan Good, Dan and Irene Zimmerman, William and Pauline Gratz (In memory of their son, Stephen), B.J. Ihlenfeldt and Monona Bootery and Family Shoes. Eastmorland thanks you all for your generosity. Your donations will be put to good use.

*The commentary presented here does not necessarily reflect the viewpoints of the Eastmorland Community Association.*

*Mail us your views on these comments or anything else you wish to have published. You can remain anonymous. Address them to: ECA Viewpoint, PO Box 14584, Madison, WI 53708. It will be interesting to hear your views and suggestions. All comments will be published in the next issue of Hi, Neighbor!*

**Do you have suggestions for the next issue of *Hi, Neighbor!*? Email them to us at [newsletter@eastmorland.org](mailto:newsletter@eastmorland.org)**

# BONGO VIDEO!

4120 MONONA DR.  
222-1100  
Open Daily 11 to 9:30

CHECK OUT OUR DAILY SPECIALS  
[WWW.BONGOVIDEO.COM](http://WWW.BONGOVIDEO.COM)  
FOR INFO ON NEW RELEASES  
CHECK US OUT ON FACEBOOK



**COUPON**  
**RENT 1 GET 1 FREE**  
OF EQUAL OR LESSER VALUE  
CANNOT BE USED IN COMBO WITH DAILY SPECIALS  
EXPIRES 5/1/2011  
BONGO VIDEO 4120 MONONA DR.

\*FANTASTIC VIDEO LIBRARY\*  
\*SUPER LOW RENTAL RATES\*  
\*EASY\*QUICK\*FREE MEMBERSHIP\*

## Buy Local. Bank Local.

Come Home to personalized service at a local, independent bank. Visit any of our four convenient locations, or bank online.

See mortgage rates at [home-savings.com](http://home-savings.com)



3762 East Washington Avenue



**HOME**  
SavingsBank  
*There's no bank like Home!*

Veronica Bieganek, Branch Manager  
282.6114



[home-savings.com](http://home-savings.com) • 282.6000

## JADE MONKEY COCKTAIL LOUNGE

109 COTTAGE GROVE RD.



**YOUR NEIGHBORHOOD BAR!**

[WWW.JADEMONKEY.COM](http://WWW.JADEMONKEY.COM)

FEATURING OVER 100 EXOTIC COCKTAILS AND  
BEERS FROM AROUND THE WORLD

## Accurate Custom Creations

Remodeling  
With A  
Twist!

Local & Family  
Owned!

Fully Insured!

Free Quotes!



BEFORE



AFTER

- Framing
- Painting Interior & Exterior
- Cabinetry
- Finish woodworking
- Landscaping
- Flooring
- Siding • Drywall
- Windows • Decks
- Plumbing • Tiling
- Insulation/Spray Foam
- HVAC • Power Washing
- Electrical
- Much more!

Accurate Custom Creations

3926 Calvert Road

Madison WI, 53714

(608)279-5385 Office

[accuratecustomcreations@live.com](mailto:accuratecustomcreations@live.com)

Remodeling & General Contracting

# The 1/4-Acre Garden Spot

## 3rd Annual Eastmorland Plant & Seed Swap (EPASS)

Would you like to meet your some of our neighbors who enjoy gardening as much as you do? Then, we'd love to see you at the 3rd Annual Eastmorland Plant & Seed Swap:

Saturday, May 21, 10 am - 2 pm  
Eastmorland Community Gardens  
Corner of Hargrove & Walter Streets

What is suggested for trade:

- Split, seedling and sapling plants of all types, shapes, and sizes;
- Seeds and bulbs of all types (not more than 2 - 3-years-old); and
- Limited gardening tools and materials.

Please look for details on the swap in May's "Hi, Neighbor!" and look for Ed Woolsey's calendar and guide to seed starting and planting coming soon to [www.eastmorland.org](http://www.eastmorland.org). For more information call Suzanne at 244-2128



## Madison Parks Seeks Public Input for 2011-2016 Park and Open Space Plan

The Madison Parks Division is updating the Park and Open Space Plan for 2011-2016. Staff is collecting public input for this plan through an online survey and three public input meetings. The purpose of the Park and Open Space Plan (POSP) is to serve as a long range planning guide for decisions made by City Boards and Commissions, City agencies and staff. It is a tool used to guide decisions for a variety of Park and Open Space issues such as city policies, park acquisitions, facility development, as well as park funding. The POSP is also a necessary component to be eligible for Federal and State grants.

All Madison residents are encouraged to participate in this process by filling out the online survey or attending one of the public input presentation meetings. The survey also allows for input concerning current and future park programming opportunities. Madison Parks is where we play. Our community stays strong when we play together. Staff wants to take steps to ensure that your Madison Parks programming needs are met.

We encourage you to take a few minutes to fill out the online survey by February 15 at <http://www.surveymonkey.com/s/parkandopenspace>, or join us at one of the public meeting presentations. The same survey will be provided at the meeting.

### Public Meeting Dates

- February 3, 7-9 pm, Alicia Ashman Public Library, 733 N. High Point Rd.
- February 10, 7-9 pm, Warner Park Community Recreation Center, 1625 Northport Drive

### Questions or Concerns?

Please email the [parkandopenspaceplan@cityofmadison.com](mailto:parkandopenspaceplan@cityofmadison.com)

**There may still be snow on the ground, but it's time to start thinking about gardening!**

**Do you have gardening tips to share? Pictures of your garden? Why not share them with the readers of "Hi, Neighbor!"?**

Send your submissions to [newsletter@eastmorland.org](mailto:newsletter@eastmorland.org)

**WOODMAN'S**  
• MARKETS •

**EMPLOYEE OWNED**

OPEN 24 HOURS A DAY — SEVEN DAYS A WEEK

## Dane County 175th Anniversary: Join the Party!



*Kathleen Falk, Dane County Executive*

In 2011, we're having a party in Dane County and everybody's welcome!

This year marks 175 years since the first Wisconsin territorial legislature created Dane County.

To mark the occasion, we have a number of events planned to help families celebrate our rich history and diverse culture. A full run down is at: [www.danecounty175.org](http://www.danecounty175.org)

Thanks to the hard work of a group of citizens who have spent the past six months helping plan this year-long party, we've selected several days for you to take pictures of the people and places that make Dane County special to each and every one of us.

The first of those four "Days in Dane" comes up February 25th and I hope you'll share your pictures through the website we've set up.

"Dane County Passport" will showcase 12 of the most popular outdoor destinations in our county, where in addition to some peace and quiet, families will also find some fun trivia through the year.

There will also be a 175th corn maze and so much more to help mark our county's 175th birthday!

Now, some fun facts about the greatest of Wisconsin's 72 counties:

- Dane County has been a county longer than Wisconsin has been a state. Dane County was created in 1836. Wisconsin became a state in 1848.
- Dane County's population back in 1836 was a mere 311 settlers. Today we're closer to a half-million people of all ages, races, religions, and backgrounds.
- The county is named for Nathan Dane, the Massachusetts man who chaired the committee that drew up the governing rules for the Northwest Territory.
- The county's first governmental unit - a three person board of commissioners - was elected in 1839.

We've sure come a long way!

We have a big party planned because we have a lot to celebrate! Take some time in 2011 and join the fun, celebrating the countless things that make Dane County great!

## CD RATES TOO LOW?

CONSIDER THESE ALTERNATIVES

**Guaranteed Safety of Principal**  
**Guaranteed Interest Rates**

\$	Term	Rates	\$
	<b>2 Years</b> . . . . .	<b>3.00%</b>	
	<b>3 Years</b> . . . . .	<b>3.15%</b>	
	<b>5 Years</b> . . . . .	<b>3.65%</b>	

• *No stock market risk*

- Great alternatives to CDs and lower yielding annuities
- Tax deferral option or monthly interest income available
- Minimums: \$10,000 for Non IRA accounts, \$5,000 for IRA accounts

**Mennenga Tax & Financial**

**608-241-5678**

Fixed Annuity Underwritten by Employees Life Company (Mutual) Rates subject to change. Policy Form: WF105

## Change of Status for Dempsey Manor?

Ecumenical Housing Corporation, EHC, is a nonprofit ministry of faith communities dedicated to providing quality, affordable housing. Presently, Immaculate Heart of Mary Catholic Church, St. Dennis Catholic Church, City Church, Burke Lutheran, Deerfield Lutheran, Hope Lutheran, Lake Edge Lutheran, Messiah Lutheran, St. Paul's Liberty Lutheran, St. Stephen's Lutheran, Bashford United Methodist, Monona United Methodist, Lakeview Community Moravian Church, Bryn Mawr Presbyterian Church, Lake Edge UCC, and Plymouth Congregational UCC are sponsored faith communities of the organization.

EHC owns and operates Dempsey Manor at 12 Dempsey Road an a apartment community for residents fifty-five years of age and better who meet the Wisconsin Housing and Economic Development Authority's (WHEDA) guidelines for affordability. EHC has a Conditional Use Permit (CUP) and seeks an alteration to its existing CUP to convert Dempsey Manor to a non-age restricted apartment community that continues to meet WHEDA's guidelines for affordability. EHC would like to alter the CUP to allow the organization to meet the changing needs of the community. When EHC started over thirty years ago, the greatest need was for affordable housing for seniors. Today, the needs of the community have changed dramatically. There are abundant affordable options for

housing for those fifty-five years of age and better, but those options decrease dramatically for people who are younger than fifty-five.

Dempsey Manor is currently an apartment building with 14 one-bedroom apartments and 11 two-bedroom apartments (25 total apartments). Also, EHC's corporate office is located at Dempsey Manor.

EHC is proposing to partner with several organizations including United Way Housing First Initiative which includes the YWCA, The Road Home and Salvation Army as well as HUD Veterans Affairs Supportive Housing. These partnerships will provide services to residents. EHC will continue to rigorously screen potential residents.

EHC is not proposing any physical modifications to the building internally or externally. The only change that EHC is proposing is to request a variance in the parking stall ordinance which requires thirty-four parking stalls. Since the building was built, the ordinance for the size of handicapped parking stalls has changed; so they request changing their four handicapped stalls into two large handicapped stalls, which would give them twenty-five total parking stalls.

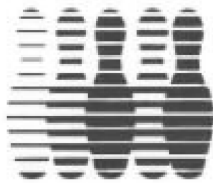
EHC is submitting for change requests to the City on February 9, 2011, and the Plan Commission on March 21, 2011.

## ECA Needs a Secretary

Interested in getting involved in your community? ECA is looking for an Eastmorland resident to fill the position of Secretary. If interested, call Kathy @244-8965.



*Dream Lanes*



*Free, Fast & Hot*  
222-5001

www.dreamlanes.com  
221-3596

## Paul O'Flanagan

Attorney at Law

Providing neighborhood legal advice and services, neighbor to neighbor.  
Wills, Trusts, Probate, Landlord/Tenant and more.

*Call or e-mail for a free consultation*

**608-630-5068**

paul@oflanaganlaw.com

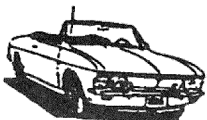
*Eastmorland Member*



**SEVERSIN'S**  
SERVICE CENTER, INC.

3401 MILWAUKEE STREET  
MADISON, WI 53714

MIKE SEVERSIN, *President*  
(608) 241-0303



## TUPPERWARE

*Catalogs Available.  
Broken pieces replaced.*

**Call Sandra**  
**698-2651**

# News from Our Schools

## Schenk Elementary Winter Carnival and Dance--February 11, 2011

The Schenk Parent Teacher Organization (PTO) is gearing up for the school's annual Winter Carnival and Dance on Friday, February 11, from 5:30-8:30 pm. With the theme of "A Masquerade Ball," it's sure to make us forget about the winter chill for an evening of family-oriented fun. Participants will enjoy carnival games and a bouncy house, a cake walk, and a DJ-inspired dance. Food will be available for purchase.

This is the largest school fundraiser planned by the PTO each year. Admission is \$1/person or \$3/family, and game tickets are \$0.25 each or 25 for \$5. Admission to the dance is free after 7:30 pm. All children must be accompanied by an adult throughout the evening.

The annual event depends upon many volunteers to make it a success. Most volunteer shifts are about one hour. Set-up volunteers will begin at 3:30 pm., and others will begin at 5:15 pm or later.

Another way to help would be to bake a cake or other treat for the cake walk. Donated items must be packaged in non-returnable containers and delivered to the school office, 230 Schenk Street, on or near the date of the carnival.

If you are interested in volunteering or baking, we would sincerely appreciate your help! Please direct any inquiries to the Schenk PTO volunteer coordinator, Kris Whitman, at 228-6654.

## School Calendar

- 2/2, 2/9, 2/16 - W & LF - PCT Early Release
- 2/2 - W - 8th Grade Scheduling Demo, 6 pm, La Follette
- 2/4 - W - Parent/Teacher Conferences, No School
- 2/7 - S - 4-Year Old Kindergarten Registration, 1-6 pm
- 2/7 - W - Student Leadership Meeting, 2 pm
- 2/7 - W - Celebration Assemblies, 7:50-9:40 am, Gym.
- 2/11 - S - Winter Carnival & Dance, 5:30-8:30 pm
- 2/25 - District-wide - SWEIO Convention - No School
- 3/2, 3/9, 3/16 - W & LF - PCT Early Release
- 3/7 - S - Kindergarten Registration, 1-6 pm
- 3/14 - S - K-5 Staff Development - Early Release @ 10:45 or 11:30 am
- 3/23, 3/30 - W - PCT Early Release
- 3/29 - End of 3rd Quarter Early Release - Elementary Grade Reporting - 10:45 or 11:30
- 4/6, 4/13, 4/27 - W & LF - PCT Early Release
- 4/18 - District-wide - No School - Spring Break
- 4/25 - District-wide - School Resumes

(S) Schenk ES / (W) Whitehorse MS / (LF) La Follette HS

**HospiceCare<sup>inc.</sup>**  
**Thrift Store**

**SHOP! DONATE! VOLUNTEER!**

**TWO LOCATIONS!**

**EAST: 1733 THIERER ROAD**  
2 BLOCKS OFF EAST WASHINGTON,  
BEHIND MERMAID CAR WASH  
(608) 327-7200

**WEST: 122 JUNCTION ROAD**  
ACROSS FROM TARGET  
(608) 833-4556

**ACCEPTING DONATIONS DAILY AT BOTH STORES.**  
**FREE PICKUP SERVICE FOR FURNITURE DONATIONS.**

**STORE HOURS**  
**MONDAY - THURSDAY, 10:00 A.M. - 7:00 P.M.**  
**FRIDAY & SATURDAY, 10:00 A.M. - 5:00 P.M.**  
**SUNDAY, NOON - 4:00 P.M.**

[hospicecarethriftstore.com](http://hospicecarethriftstore.com)

# One- and Two-Family Dwellings Need Smoke Alarms and Carbon Monoxide Alarms

New State Law Effective February 1, 2011

As of February 1, 2011, there are Wisconsin requirements for both smoke alarms and carbon monoxide alarms in almost all one- and two-family dwellings, regardless of the building's age. The new carbon monoxide safety net is for dwellings with fuel burning appliances, fireplaces or attached garages.

## Owners and Renters Have Responsibilities

Owners are responsible for alarm installations and occupants have responsibility to maintain the alarms. Owners must repair or replace alarms within five days of written notice from an occupant or an inspector. Authorized inspectors may enter dwellings to inspect alarms when requested by owners or occupants.

Tampering with alarms is illegal, dangerous, and can cause serious liability concerns.

## Where and What Kinds?

Alarms must be installed in the basement, and on each floor level. The alarms need not be installed in attics, garages or storage areas.

The alarms may be separate or combination units, powered by batteries, or in the case of new construction, tied into the home's electrical system, interconnected with battery backup. (Ed., As of August 15, 2010, the City of Madison requires hard-wired smoke alarms or alarms with long-lived batteries.)

Installation must follow manufacturers' instructions. Those instructions are provided with new alarms and usually can be found on the manufacturers' Web sites. The manufacturer should be identified on the alarm. Alarms used in Wisconsin must be approved by Underwriters Laboratories.

## Save lives and property!

Smoke kills more people in residential fires than the flames. Smoke alarms detect the presence of smoke even before you can see it or smell it, especially when flames might not be in your line of sight. (There are alarms for people with visual or auditory disabilities.)

Carbon monoxide is a gas created by incomplete burning of fuels. Carbon monoxide is colorless, odorless and tasteless,

but highly toxic. It can build up over time, with unrecognized symptoms such as headaches, nausea, disorientation or irritability eventually building to unconsciousness and fatal poisoning. Carbon monoxide alarms warn of the gas before it reaches dangerous levels.

Examples of some carbon monoxide sources are

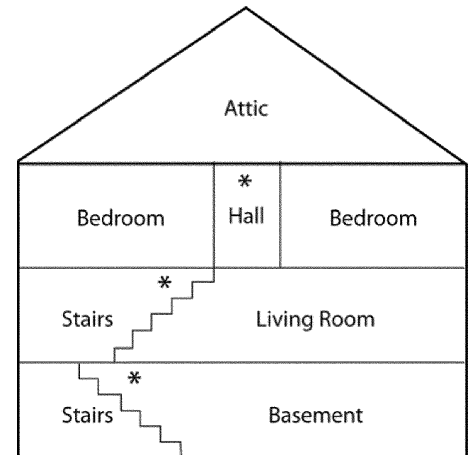
garages, heaters, fireplaces, furnaces, appliances or cooking sources using coal, wood, oil, kerosene or other fuels. Electric appliances are not carbon monoxide sources.

## Alarms do not guarantee safety

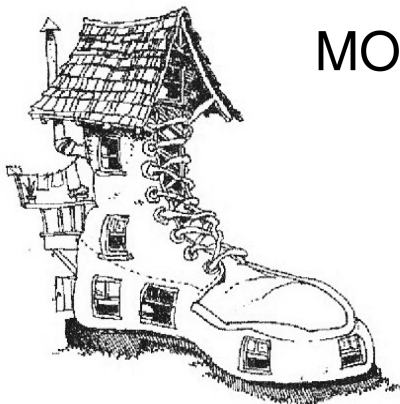
Alarms must be tested regularly and should have batteries changed at least annually, or when a low-battery warning sounds. The alarms must not be painted over and should be kept clean. Alarms should be replaced when they reach the end of their life span.

## Multifamily buildings

Buildings with more than two residential units also need smoke and carbon monoxide alarms. The installation requirements for those multifamily dwellings are different. Rules for alarms in multifamily dwellings and other public buildings are in the Wisconsin Commercial Building Code, Comm 61-66.



*Install a smoke alarm and a carbon monoxide alarm (or combination alarms) in the basement and on each floor except the attic or a storage area. Smoke alarms are also required in each bedroom.*



## MONONA BOOTERY & FAMILY SHOES

LAKE EDGE SHOPPING CENTER  
4101 MONONA DRIVE MADISON, WI 53716-1662  
(608) 222-3141

shoes4u@charterinternet.com  
mononabootery.com

FAMILY OWNED & OPERATED  
EDDIE & CHRIS BRATZ  
FATHER & SON

# Around Your Neighborhood: Leaf Raking Party



*Hard at work.*



*Sadler takes a break, trusty rake in hand.*



*Rakers in action. Sadler takes a photo from his bicycle.*



*Almost done!*



*(from left) Carrie Ezzell, Alder Larry Palm, and neighbors enjoy food and conversation.*

## Community Supported Agriculture Event Promotes Eating Local, Healthy, Organic Vegetables

Southern Wisconsin residents interested in receiving fresh foods from a Community Supported Agriculture (CSA) farm are invited to meet local farmers in person at the 19th Annual Madison Area CSA Coalition's CSA Open House event. It takes place on Sunday, March 13th, 1-4 p.m., at Monona Terrace, 1 John Nolen Drive. This family-friendly event features a diverse array of CSA farms, workshops, kids' activities, music, a raffle, farm-fresh foods and information sessions to showcase the many benefits of CSA.



the greater Madison, Milwaukee, Dubuque, Twin Cities, and surrounding areas.

For over 18 years the Madison Area CSA Coalition has helped make fresh food from local farms more accessible by providing financial assistance to low-income families through their innovative Partner Shares Program.

Community supported agriculture builds a strong relationship between farmers and consumers through delicious, seasonal food, on-farm events and newsletters to inform and update

consumers about what is happening on their farm and how to recognize, store and prepare their CSA share.

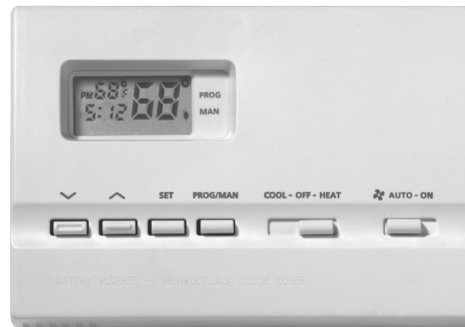
Deposits for CSA shares will be accepted at the Open House. For more information about the CSA Open House event or details about CSA farms serving Southern Wisconsin, visit the Madison Area CSA Coalition website at [www.macsac.org](http://www.macsac.org) or contact Kiera Mulvey 226-0300.

Community Supported Agriculture (CSA) farms provide weekly boxes of fresh produce, meats, or dairy products to members who purchase a share of the season's harvest. The CSA model supports Wisconsin communities by providing local farms "seed money" early in the growing season, giving consumers a genuine connection to their food and the farmers who produce it, and keeping food dollars in local economies. There are 43 Madison Area CSA Coalition farms that serve

**The Eastmorland Community Association is now on Facebook and Twitter!**

Visit [www.eastmorland.org](http://www.eastmorland.org) to "Like" and "Follow" ECA.

responsiblEnergy



## how can you turn this down?

It's that time of year for a simply irresistible energy-saving opportunity. By setting back your thermostat just 1° Fahrenheit, you could save \$25 per heating season. Bigger setbacks save even more. If we all set back just 1° Fahrenheit this winter, we could save enough gas for 3,100 homes. To find out how much you can save with larger setbacks, visit [mge.com/setback](http://mge.com/setback) and use the calculator.

**mge**<sup>®</sup>  
your community energy company